



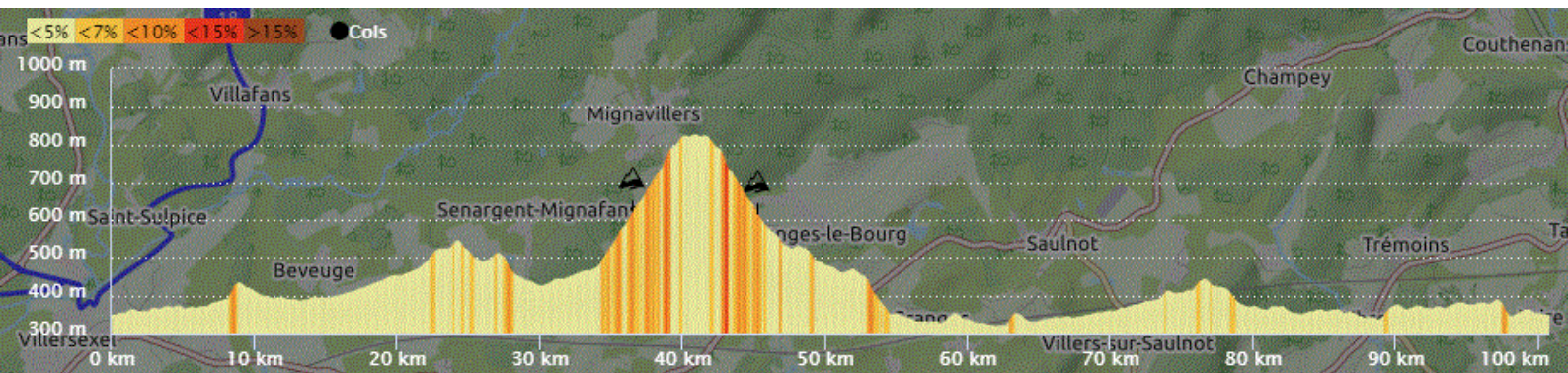
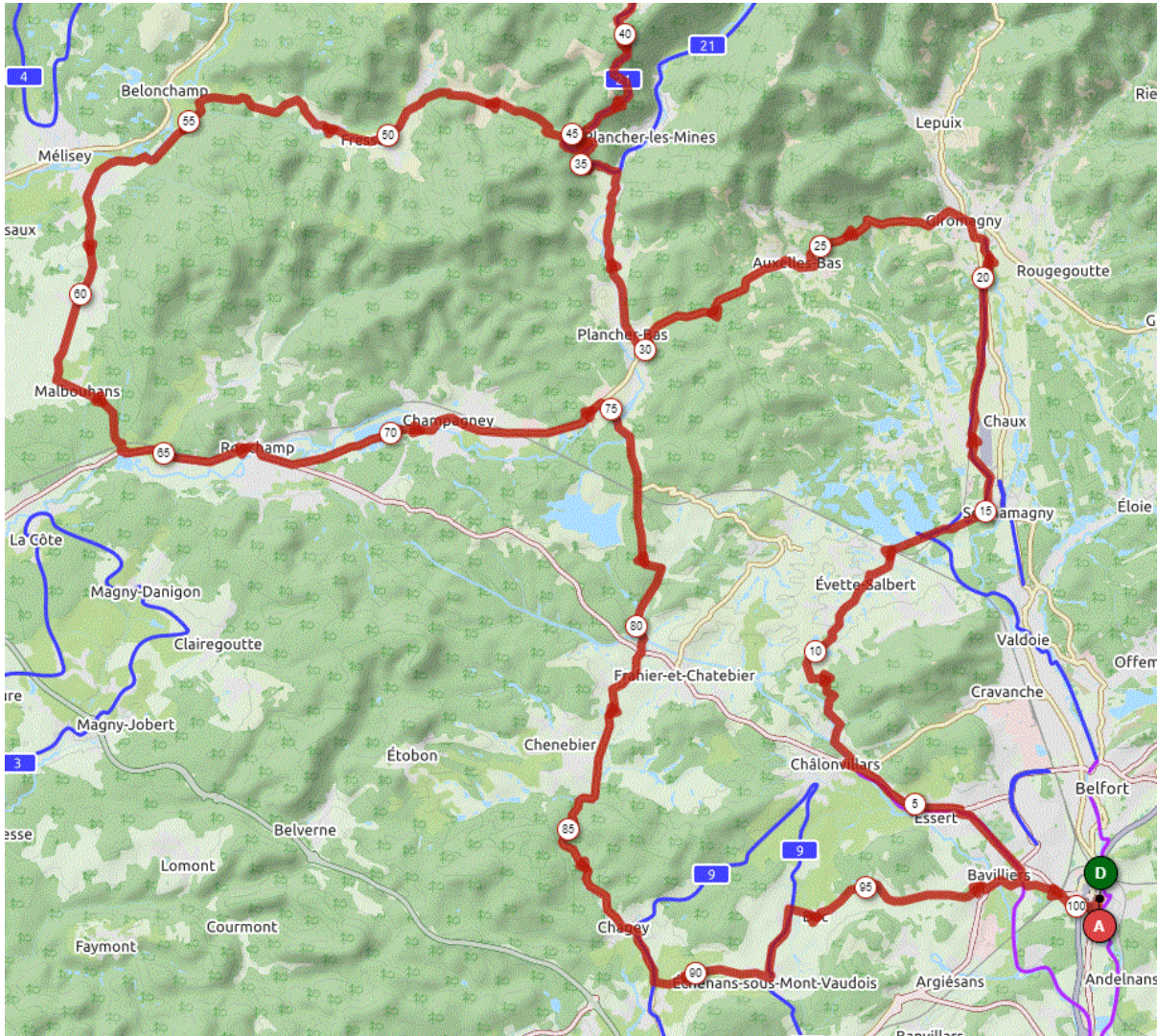
P1

Samedi 12 Mars 2022

P1

Distance 100 km – Dénivelé +1064 m

**DANJOUTIN-BAVILLIERS-ESSERT-LA FORET-EVETTE-Piste jusqu'à GIRO-AUXELLES BAS-
PLANCHER BAS- montée BELFAHY- .descente BELFAHY-CHEVESTRAYE – FRESSE-LE RADDON-
MALBOUHANS-RONCHAMP-CHAMPAGNEY-PRE BESSON-FRAHIER-ECHAVANNE-CHAGEY-
LUZE-ECHENANS-MANDREVILLARS-BUC-BAVILLIERS-DANJOUTIN-**



OPENRUNNER 9716998