



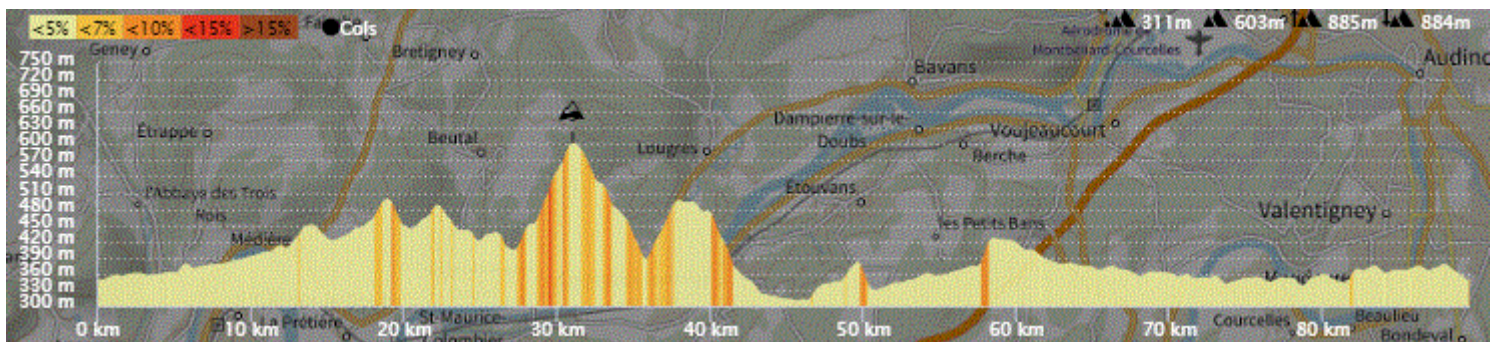
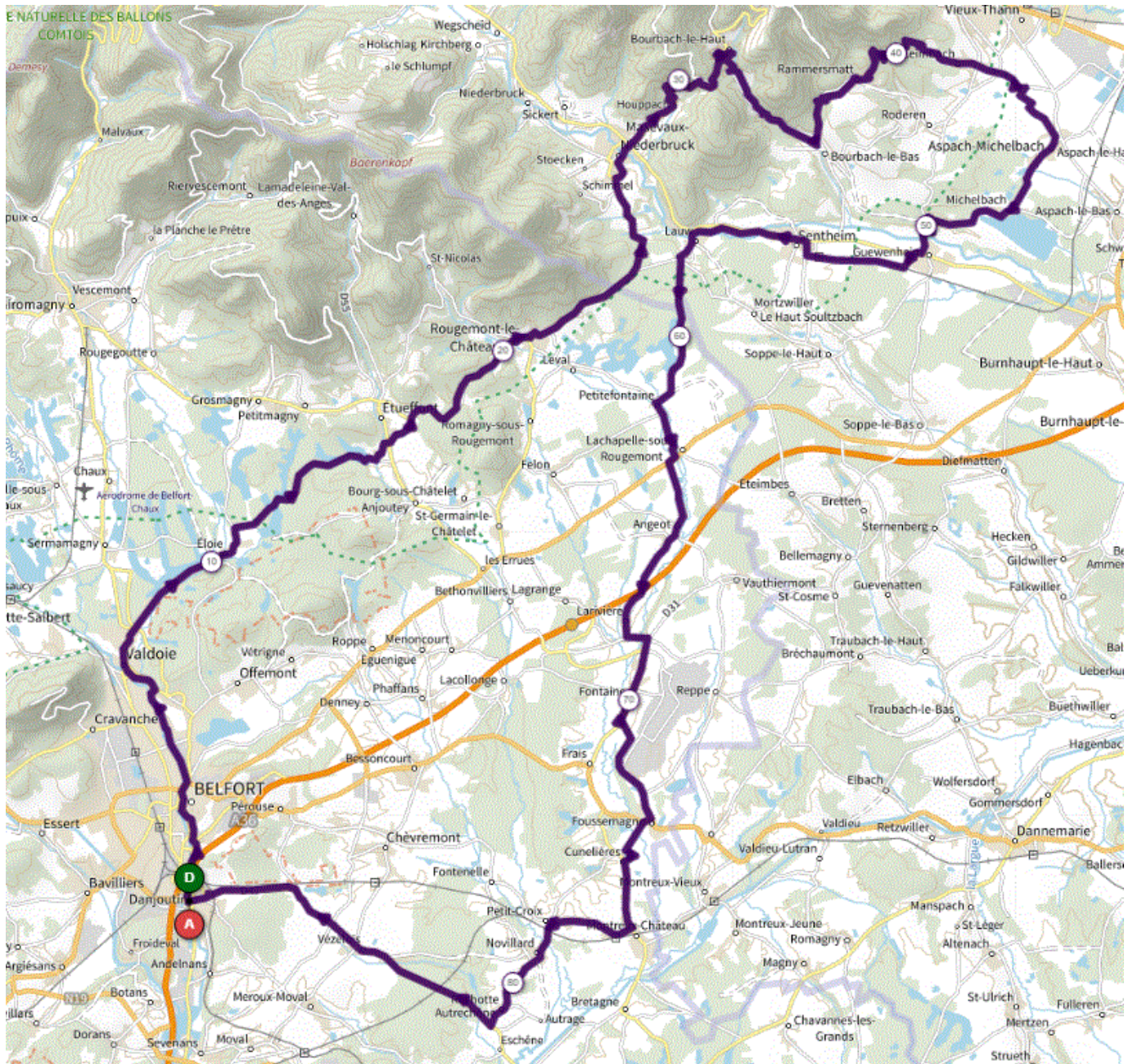
P1

Jeudi 21 Avril 2022

P1

Distance 90 km – Dénivelé +885 m

DANJOUTIN-BELFORT-VALDOIE-ELOIE-ANJOUTEY-ETUEFFONT-ROUGEMONT-MASEVAUX-BOURBACH HAUT-BOURBACH BAS-RAMMERSMATT-LEIMBACH-ASPACH-MICHELBACH-GUEWENHEIM-Piste LAUW-SEIGNEURIE-PETITFONTAINE-LA CHAPELLE-ANGEOT-LARIVIERE-FONTAINE-FOUSSEMAGNE-CUNELIERES-PETIT CROIX-NOVILLARD-AUTRECHENE-VEZELOIS-DANJOUTIN-



OPENRUNNER 9725944