



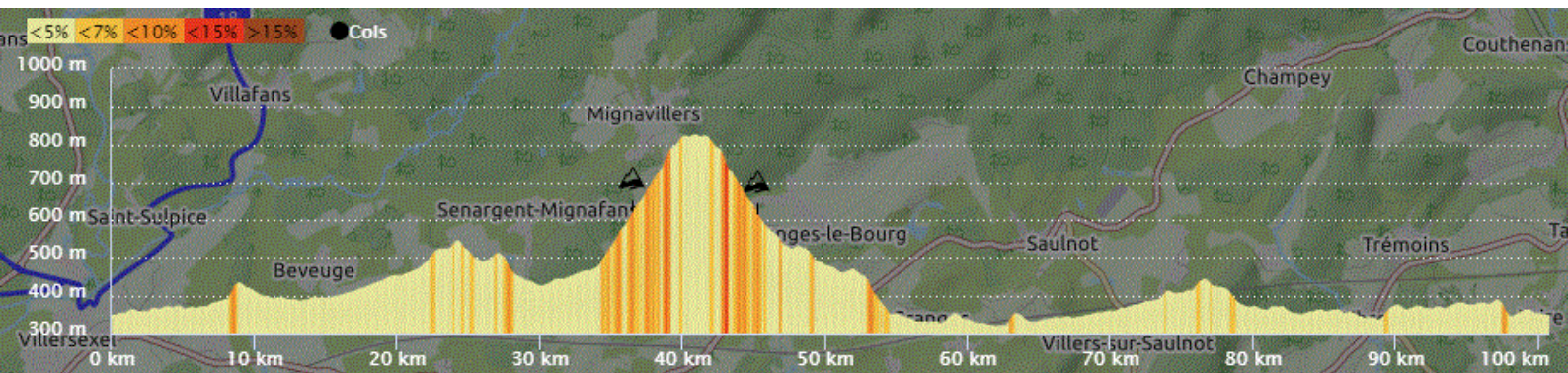
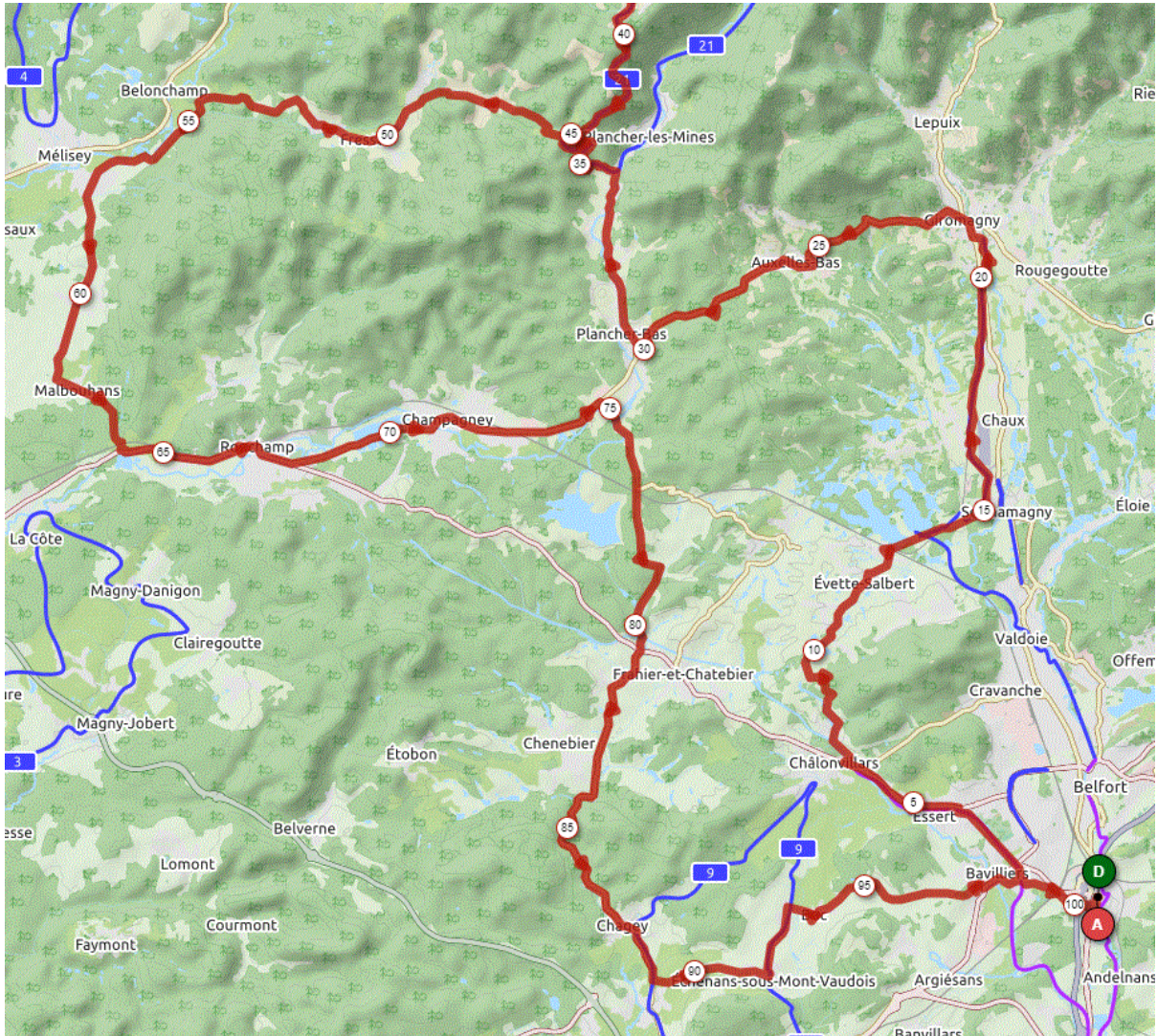
P2

Mardi 15 Mars 2022

P2

Distance 100 km – Dénivelé +1064 m

**DANJOUTIN-BAVILLIERS-ESSERT-LA FORET-EVETTE-Piste jusqu'à GIRO-AUXELLES BAS-  
PLANCHER BAS- montée BELFAHY- .descente BELFAHY-CHEVESTRAYE – FRESSE-LE RADDON-  
MALBOUHANS-RONCHAMP-CHAMPAGNEY-PRE BESSON-FRAHIER-ECHAVANNE-CHAGEY-  
LUZE-ECHENANS-MANDREVILLARS-BUC-BAVILLIERS-DANJOUTIN-**



OPENRUNNER 9716998